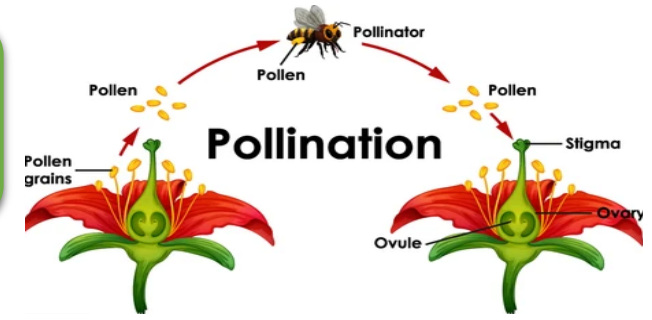
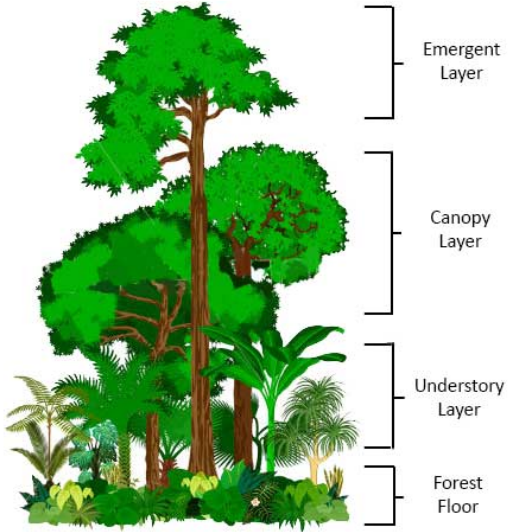




Amazonia Adventure



The layers of the forest



Reproduction

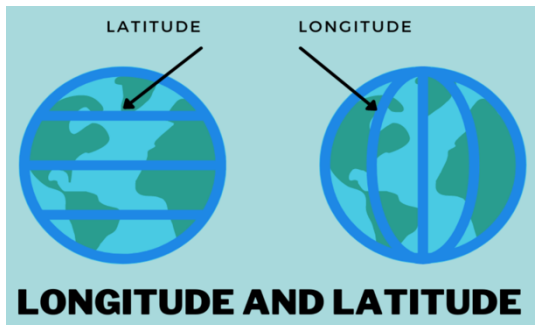
Plants reproduce in two different ways: sexual reproduction and asexual reproduction. Sexual reproduction is known as pollination, where bees carry pollen from one flower to another. With asexual reproduction, one flower can reproduce on its own.

England and Brazil

60% of Brazil is covered by the Amazon Rainforest and 13% of England is covered by forests. In Summer, England's temperature doesn't often rise above 32°C and in the Winter, it doesn't usually drop below 0°C. However, in Brazil the temperature rarely drops below 20°C all year long.

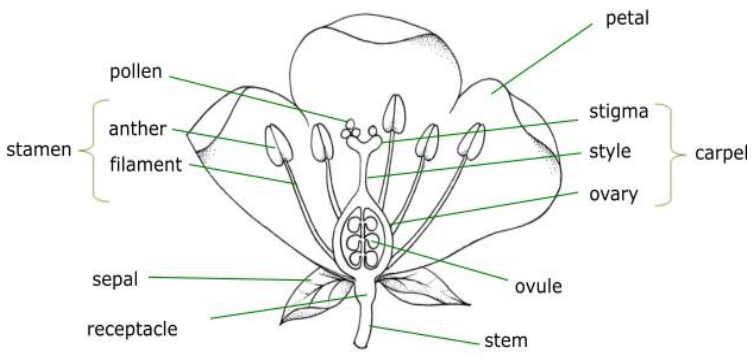
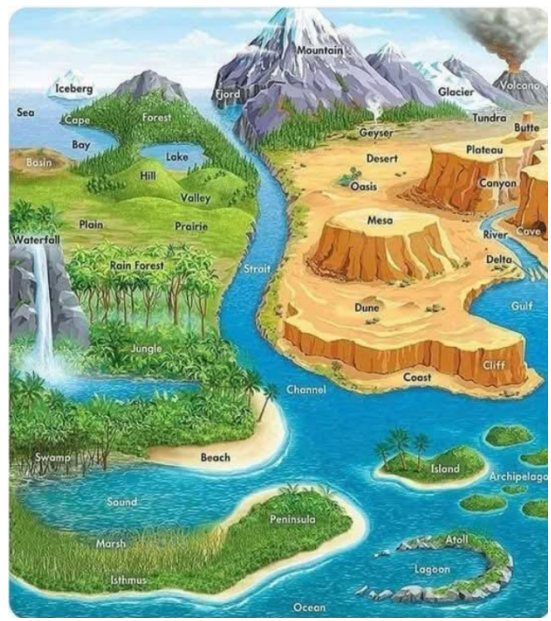
Life Cycle of a planet

There are 5 different stages: seed, germination, growth, reproduction, pollination, and seed dispersal. There are many ways that seeds can be dispersed: shaking, carrying, dropping, eating, bursting and water.



Classification of plants

Plants can be grouped together based on what type of species they are. There are 5 different groups of plants: flowering plants, conifers, mosses, ferns and grasses.





biomes

Biomes are areas of the planet with a similar climate and lands where similar animals and plants live.



emergent layer

The **emergent layer** is the highest part of a rainforest, where the tallest trees reach up to the sky, getting lots of sunlight and being very windy.



canopy layer

The **canopy layer** is like the top few floors, made of the tops of the tallest trees, where many animals live and where most of the sunlight is blocked.



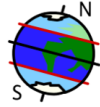
understory layer

The **understory** is like a shady, cool, and damp layer below the big treetops (canopy), where smaller plants, like palm trees and vines, and many animals like snakes, lizards and insects live, hiding in the shadows.



capricorn

Capricorn is an imaginary line a little bit south of the Equator.



tropics

The **tropics** are the parts of the Earth's surface that is closest to the Equator.



humid

When it's humid, it means the air feels sticky and damp, like when there's a lot of water in the air, making it feel heavier and wetter than usual.



biodiversity

Biodiversity is the variety of all living things on Earth, like plant, animals, and even tiny bugs, and how they all fit together in nature.



climate

Climate is a description of the average weather conditions in a place for the past 30 years or so.



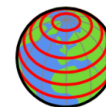
cancer

Cancer is an imaginary line a little bit north of the Equator.



forest floor

The **forest floor** is the bottom layer of the rainforest. It has poor soil but gets nutrients from the rotting plant debris. Fallen leaves, branches, the remains of dead creatures and other forest litter fall on the ground to cover the ground.



latitude

The **latitude** is like imaginary circles around the Earth, from side to side, to help us find where places are located, measuring how far north or south they are from the Equator.



longitude

Lines of **longitude** run from the top of the Earth to the bottom and divide up the Earth a bit like the segments of an orange.